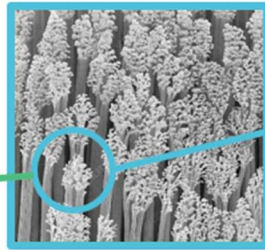
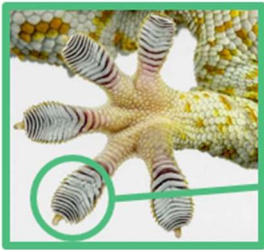




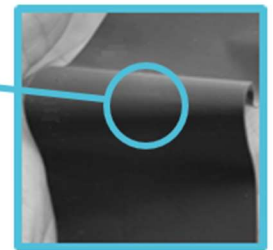
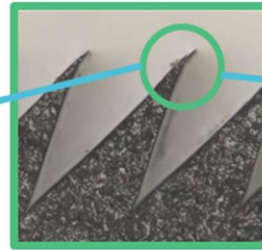
THE NEXT STEP IN ADHESIVE EVOLUTION

geCKo Materials produces **reusable, zero-energy,** directional Dry Adhesive for a variety of **military, space** and **commercial** applications.

Gecko Feet



geCKo Materials Dry Adhesive



The unique geometry of our Dry Adhesive mimics the gecko's foot structure creating their signature no-residue grip. Our micro wedges replicate the soles of their feet that are covered in "hairs" called setae.

Each wedge tip, 1/100 of a human hair thickness, engage in shear using van der Waals force, not suction. A one square inch tile of our Dry Adhesive is covered in over 400 wedges that can hold 15 lbs. 6 tiles can pull a car !

Dry Adhesive Capabilities



Reusable up to 120,000 times; no residue



Requires No Energy or Force to Attach/Release



Hold ~120kPa in Shear Strength



Food-Safe/ Medical Grade Silicone



Attach and Release in Milliseconds



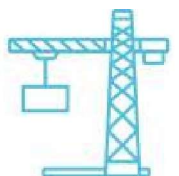
Temperature Operating Range - 115C to +350C



Dry Adhesive increases safety on construction sites



- Grasps any smooth or semi-smooth materials; solar panels, doors, wallboard, and windows
- Enhances manipulation of robotic arms
- Surface-safe and leaves no residue
- Handles tacky substances without transfer of residue
- Eliminates toxic, noisy, energy-consuming vacuum pumps; frees up space Easily integrated into existing processes
- No pinch force required
- Patented IP for both product and manufacturing processes



Construction

