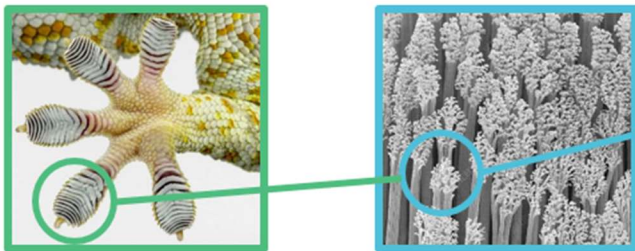




## THE NEXT STEP IN ADHESIVE EVOLUTION

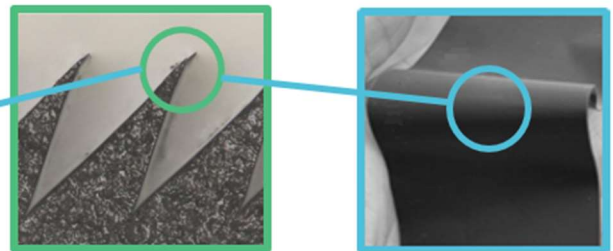
geCKo Materials produces **reusable, zero-energy,** directional Dry Adhesive for a variety of **military, space** and **commercial** applications.

### Gecko Feet



The unique geometry of our Dry Adhesive mimics the gecko's foot structure creating their signature no-residue grip. Our micro wedges replicate the soles of their feet that are covered in "hairs" called setae.

### geCKo Materials Dry Adhesive



Each wedge tip, 1/100 of a human hair thickness, engage in shear using van der Waals force, not suction. A one square inch tile of our Dry Adhesive is covered in over 400 wedges that can hold 15 lbs. 6 tiles can pull a car !

### Dry Adhesive Capabilities



**Reusable up to 120,000 times; no residue**



**Requires No Energy or Force to Attach/Release**



**Hold ~120kPa in Shear Strength**



**Glass-Safe/ Medical Grade Silicone**



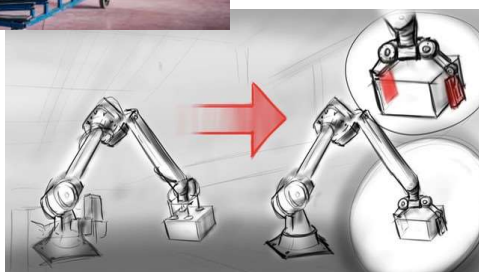
**Attach and Release in Milliseconds**



**Temperature Operating Range - 115C to +350C**



Dry Adhesive easily replaces costly, toxic and noisy vacuum pumps



- Grasps smooth and semi-smooth material or package
- Able to hold, maneuver and release glass uniformly without leaving any residue
- Strong enough to handle heavy glass sheet or objects easily; no pinch force required
- Will maintain grip in high temperature and any barometric pressure
- Easily integration; reduce cost
- Patented IP for both product and manufacturing processes



**Glass & Delicate Materials Production**